

PRO II

USB MULTI-SLOT CARD READER/WRITER

User's Manual



Congratulations on the purchase of your new AtechFlash Technology PRO II flash reader/writer. PRO II is a read / write device that supports multiple types of flash memory cards and we recommend you read this manual carefully to become familiar with the operation of the product.

This manual explains the features of your new PRO II reader, the specifications and the installation in a few simple steps. Please retain this guide for further reference.

If you have questions regarding your PRO II reader / writer, please call our technical support hotline at toll free number

1-866-85-ATECH (1-866-852-8324)

or e-mail us at

techsupport@atechflash.com

or visit our web site at

www.atechflash.com



AtechFlash Technology, Inc.
www.atechflash.com

Table of Content

1. Introduction
2. Package content
3. Features
4. Specifications
5. Hardware setup
6. Software setup

Introduction

PRO II is a compact, light-weight and easy-to-install read / write device for today's most common types of flash memory cards. It brings you the convenience of data transferring between your PC and other personal electronic devices, such as digital camera, MP3 player, PDA, Voice recorder, Personal organizers, Pocket PC and many more. With the versatile design, PRO II can be used externally, or internally when mounted into your PC's standard 3.5" drive bay.

The flash memory cards support by PRO II reader/writer includes:

CF	Type I/II CompactFlash™ card
MD	IBM MicroDrive™
SD	Secured Digital™ card
MMC	MultiMedia™ card
SM	SmartMedia™ card

Plus one USB port on the front for easy access.

Package Content

- 1x PRO II Flash reader / writer unit
- 1x External USB cable (External USB port to PRO II USB)
- 1x External DC-USB cable (External USB to PRO II DC Input)
- 1x Internal USB cable (Motherboard USB header to PRO II USB)
- 1x Internal Power Supply "Y" cable
(Power Supply Unit to PRO II Power Input)

Features

1. For both internal (3.5" Drive Bay) and external use.
2. Reads and Writes
 - Type I and II Compact Flash™ cards
 - IBM Microdrive™
 - SmartMedia™ cards
 - Multimedia™ cards
 - Secured Digital™ cards
3. Fast file transferring between portable Memory Card, PC, Notebooks and Mobile devices, such as
 - Digital Cameras,
 - Pocket PC,
 - Personal Digital Assistant (PDA),
 - Personal Organizers,
 - Voice Recorders, etc.

Specifications

Dimension :
102(W) x 25.4(H) x125(D) mm / 4.02(W) x 1(H) x 4.92(D) in

Power Required :
USB, Action power: 5V ± 5%

Reads and Writes : (Hot-swapping)
Compact Flash™, IBM Microdrive™, SmartMedia™,
Mutimedia™, and Secure Digital™ cards

Download / Upload files via high speed USB 1.1 Transfer rate up to : 12Mb/Sec

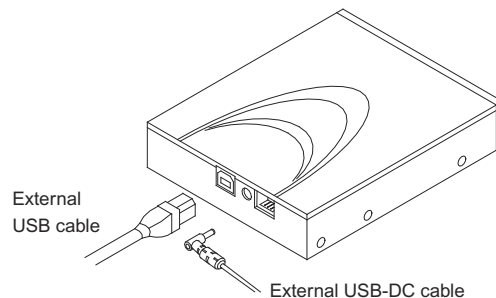
Support :
Win 98 / SE/ ME/ 2000/ XP, Mac OS 8.6 or later, Linux.

Plug & Play for :
Windows ME/ XP (no software driver required)

Hardware Setup

Using PRO II externally

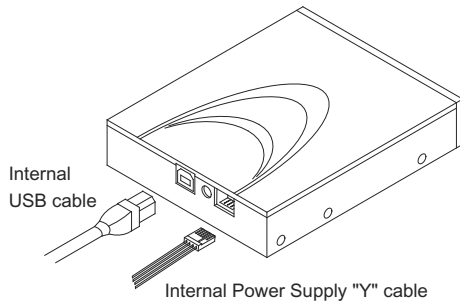
Hardware setup is easy. Simply plug in the External USB cable and USB to DC cable, your new PRO II reader/writer is ready to operate. Please refer to the following diagram for detail.



Using PRO II internally

Like mounting a 3.5" floppy drive to your PC, PRO II comes with 3 screw holes on each side for position adjustment. Insert PRO II into one of empty 3.5" external drive bay of your PC, align the PRO II front panel evenly with the computer front bezel and apply screws to secure it into the place.

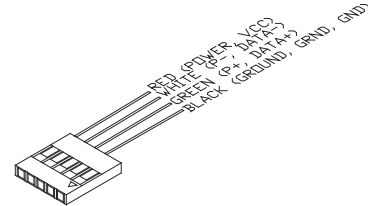
For internal cable connections, plug in the Internal USB cable and power supply "Y" cable. Please refer to the following diagram for connection to the PRO II .



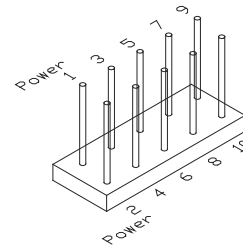
Due to certain motherboard USB headers have different pin layouts, it is possible that user needs to reconfigure the wire pin assignments on the internal USB cable, in order to make PRO II function properly. Following explains how to reconfigure wire pin assignment.

The Internal USB cable has 4 color wires on the end that plugs in to the motherboard. The 4 color wires are Red, White, Green and Black wires. The correct wire assignments shall be:

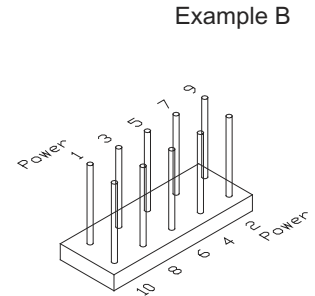
Red = Power or VCC
 White = P- or Data-
 Green = P+ or Data+
 Black = Ground or GRND or GND



Please refer to your motherboard manual or contact your motherboard manufacturer for the USB header pin layout information. Two of the most common layouts are as follow:



Example A



Example A	1. USB Power (or VCC or +5V)	2. USB Power (or VCC or +5V)
	3. P-	4. P-
	5. P+	6. P+
	7. GND	8. GND
	9. (Empty pin)	10. GND

Software Setup

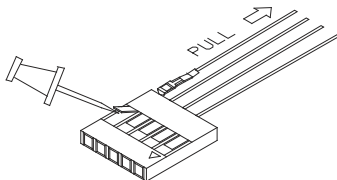
Example B	1. USB Power (or VCC or +5V)	10. GND
	3. P-	8. GND
	5. P+	6. P+
	7. GND	4. P-
	9. (Empty pin)	2. USB Power (or VCC or +5V)

If your motherboard USB header pin layout matches one of the examples above, you will not need to reassign the wire pins on the internal USB cable.

If your motherboard USB header pin layout does not match the examples above, please take following steps to reassign the wire pins on the internal USB cable.

- (1) Determine the wires that you need to remove from the pin connectors first by referring to your motherboard USB header pin layout.
- (2) Using a needle or push pin to flip up the tiny plastic tab and pull the wire out from the connector. Please take caution on this step as excessive force on flipping the tab may cause the tab to break.
- (3) Repeat above steps for each wire that requires changing.
- (4) Insert the wire pin back into the correct slot and press the tiny plastic tab down will hold the wire in its position.

The diagram below shall give you an idea of how it is done.



Windows ME and Windows XP or later

Software Setup for PRO II under operating systems, like Windows ME and Windows XP, is very simple. No software driver is required. Here are the few steps:

1. Once you plug in the two external USB cables (as described in Hardware Setup), your computer shall immediately recognize the PRO II device and install all drivers automatically.
2. You shall see a small icon appear on the lower right hand corner of your desktop. (as shown below)



Windows 98, Windows 98 SE and Windows 2000

For Windows 2000

Prior to installation of PRO II reader/writer, please take following steps to install device driver first, then proceed with the necessary cable connections (as described in Hardware Setup), and reboot the computer.

A software setup file can be downloaded from our web site:
<http://www.atechflash.com/drivers/pro2setup.exe>.

After downloading [pro2setup.exe], execute the file and it will lead you into setup program.



Click on "Next"

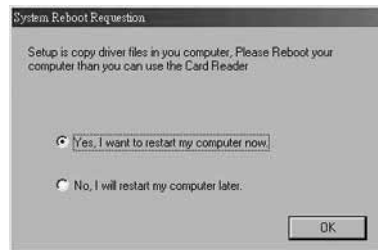


Click on "Yes" to accept the agreement and click on "Next"



Click on "Finish"

You will need to restart your computer, in order to complete your installation. Please make sure that all of files are saved and it is okay to restart the computer.



Select "Yes, I want to restart my computer now" and click on "OK"

Computer will restart and you can connect the cables from PRO II reader/writer to your computer (as described in Hardware Setup) after restart. Your computer shall recognize the Pro II unit automatically and install its driver for it.

After complete installation, you shall find 3 "Removable Disk" icons created in [My Computer]. Clicking on each Removable Disk will give you the access to the flash cards you have inserted into PRO II reader/writer slot.

To remove Flash media cards from PRO II reader/writer

1. Double click on the "Removable Device" icon on the lower right hand corner of your desktop.



2. A list of three "USB Disk" devices will appear. Select the one you would like to remove and click on "Stop" button.



3. Click on "OK" when "Stop a Hardware device" menu pop up.



4. Your Computer will notify you when it is safe to remove your Flash card. Click on "OK" and remove the Flash card.